

# 50 BLUES JAM TRACKS

CHART BY GRIFF HAMLIN

## 2 BEAT SWING.MP3

G G#DIM7 AMIN7 D7    G G#DIM7 AMIN7 D7

G    G7    C    G    B7    E7

A7    D7    G    G7    C    G

G    E7    AMIN D7    G    C    C#DIM7

G    G#DIM7    AMIN7    D7

G    G#DIM7    AMIN7    D7    G    G#DIM7    AMIN7    D7

## 12 BAR BLUES GROOVE.MP3

G7    C9    G7    C9

2

Musical notation for a 2-measure blues progression in G major. The first staff shows a treble clef with a key signature of one sharp (F#). The notes are G4, A4, B4, G4, F#4, E4, D4, C4, G4, A4, B4, G4, F#4, E4, D4, C4. Chords are G7 (measures 1-2), D7#9 (measures 3-4), and G7 (measures 5-6). The second staff shows a treble clef with a key signature of one sharp. The notes are C4, D4, E4, F#4, G4, A4, B4, C5, G4, A4, B4, C5, G4, A4, B4, C5. Chords are C9 (measures 1-2), G7 (measures 3-4), and D7#9 (measures 5-6). The piece ends with a double bar line and repeat dots.

12 BAR BOOGIE IN A 160BPM.MP3

Musical notation for a 12-bar blues progression in A major. The first staff shows a treble clef with a key signature of no sharps or flats. The notes are A4, B4, C#4, A4, G#4, F#4, E4, D4, A4, B4, C#4, A4, G#4, F#4, E4, D4. Chords are A (measures 1-4), D7 (measures 5-8), and A (measures 9-12). The second staff shows a treble clef with a key signature of no sharps or flats. The notes are A4, B4, C#4, A4, G#4, F#4, E4, D4, A4, B4, C#4, A4, G#4, F#4, E4, D4. Chords are A (measures 1-4), E7#9 (measures 5-8), and A (measures 9-12). The piece ends with a double bar line and repeat dots.

BACKING TRACK - SHUFFLE BLUES IN A.MP3

Musical notation for a 12-bar shuffle blues progression in A major. The first staff shows a treble clef with a key signature of no sharps or flats. The notes are A4, B4, C#4, A4, G#4, F#4, E4, D4, A4, B4, C#4, A4, G#4, F#4, E4, D4. Chords are A (measures 1-4), D7 (measures 5-8), and A (measures 9-12). The second staff shows a treble clef with a key signature of no sharps or flats. The notes are A4, B4, C#4, A4, G#4, F#4, E4, D4, A4, B4, C#4, A4, G#4, F#4, E4, D4. Chords are A (measures 1-4), E7 (measures 5-8), and A (measures 9-12). The piece ends with a double bar line and repeat dots.

D7 A E7 3

BASICBLUESROCK\_IN A.MP3

A7 D9

A7 E7#9

D9 A7

BLUES HI SHUFFLE G.MP3

G7 C7

G7 D7

C7 G7 D7

## BLUES MIDTEMPO SHUFFLE IN E AT 128BPM.MP3

## BLUES ROCK 60'S IN A 110BPM.MP3

E A BMIN E 5

BLUES STOMP IN G

G7

BLUES\_COMPLEXCHORD IN G.MP3

E D C#7 F#7 B7 E7 E D C#7 F#7 B7 E7

A7 A#DIM7 E D C#7 F#7 B7 E7 F#7 B7 E7

BLUES\_SWEETDREAMS IN G.MP3

G A7 D G

A7 D G C

6

G EMIN G C

G D G C G D

BLUESTAZZGROOVEING.MP3

G<sup>7</sup>

BMIN B<sup>b</sup>MIN AMIN

BMIN B<sup>b</sup>MIN AMIN G<sup>7</sup>

BLUESROCK IN A 166 BPM FOR PENTAT.MP3

A G C D A G C D A

G C D A G C D A F

A E7#9 A 7

BLUESROCK IN A.MP3

A7 D7

A7 E7

D9 A7 E7

BLUESHUFFLEIN A.MP3

A7 D7

A7 E7

8

D<sup>9</sup>

A<sup>7</sup>

E<sup>7</sup>



BOOGIE IN E.MP3

E

A

G

E

A

G

E



A

G

E

A

G

E

A

G



E

A

G

E

A

G

E



A

G

D

E

D

E



D

E

D

E



BRITBLUESBOOMING.MP3

G<sup>7</sup>





C7

G7



D7

C7

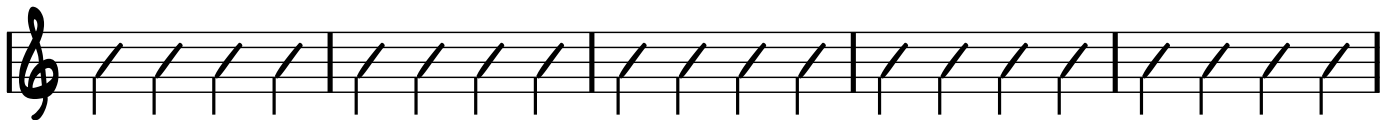
G7



CHICAGO BLUES\_MIDFAST\_TEMPO\_IN\_A\_120BPM.MP3

A7

D7



A7

E7



D9

A7

E7



COUNTRY ROCK MID-TEMP IN G.MP3

Chord progression for Country Rock Mid-Temp in G:

- Staff 1: G, C, G
- Staff 2: D, G
- Staff 3: C, G, D, G
- Staff 4: C, D, G, EMIN
- Staff 5: C, D, G

COUNTRY SHUFFLE.MP3

Chord progression for Country Shuffle:

- Staff 1: A<sup>MIN</sup>7, E7, F, D7, C
- Staff 2: G, C, G, C, C

F C A7 D7

G7 C E7 F D7

C G7 C F

G C F D7

G7 C E7 F

D7 C G7 C

EVEN 8THS BLUES.MP3

GMIN7 C9

G<sup>MIN7</sup> D7<sup>#9</sup>

FUNKEDELIC JAM 2.MP3

E<sup>MIN7</sup> A<sup>7</sup> E<sup>MIN7</sup> A<sup>7</sup> E<sup>MIN7</sup> A<sup>7</sup> E<sup>MIN7</sup> A<sup>7</sup> E<sup>MIN7</sup> A<sup>7</sup> E<sup>MIN7</sup> A<sup>7</sup>

E<sup>MIN7</sup> A<sup>7</sup> E<sup>MIN7</sup> A<sup>7</sup> E<sup>MIN7</sup> A<sup>7</sup> E<sup>MIN7</sup> A<sup>7</sup> E<sup>MIN7</sup> A<sup>7</sup> E<sup>MIN7</sup> A<sup>7</sup>

E<sup>MIN7</sup> A<sup>7</sup> E<sup>MIN7</sup> A<sup>7</sup> E<sup>MIN7</sup> A<sup>7</sup> E<sup>MIN7</sup> A<sup>7</sup> E<sup>MIN7</sup> A<sup>7</sup> E<sup>MIN7</sup> A<sup>7</sup>

E<sup>MIN7</sup> A<sup>7</sup> E<sup>MIN7</sup> A<sup>7</sup> E<sup>MIN7</sup> A<sup>7</sup> E<sup>MIN7</sup> A<sup>7</sup> E<sup>MIN7</sup> A<sup>7</sup> E<sup>MIN7</sup> A<sup>7</sup>

E<sup>MIN7</sup> A<sup>7</sup> E<sup>MIN7</sup> A<sup>7</sup> E<sup>MIN7</sup> A<sup>7</sup> A<sup>7</sup> C B<sup>MIN</sup>

E<sup>MIN7</sup> C B<sup>MIN</sup> E<sup>MIN7</sup> C B<sup>MIN</sup>

E<sub>MIN</sub><sup>7</sup>

C

B<sub>MIN</sub>

E<sub>MIN</sub><sup>7</sup>



FUNKEDELIC JAM 3.MP3

E<sub>MIN</sub><sup>7</sup>



A<sup>7</sup>



B<sup>7</sup>



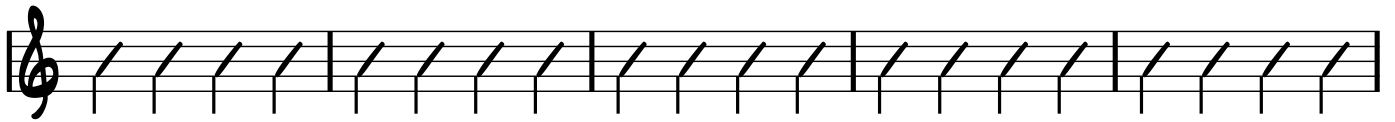
FUNKEDELIC JAM.MP3

C<sup>9</sup>





F<sup>9</sup>

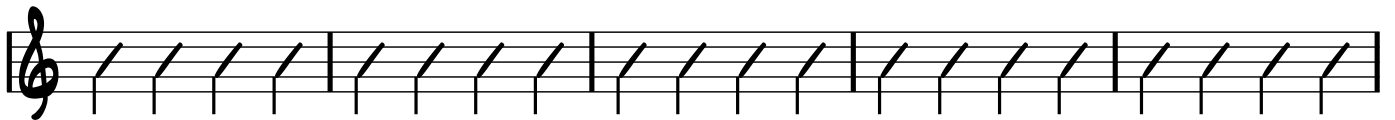


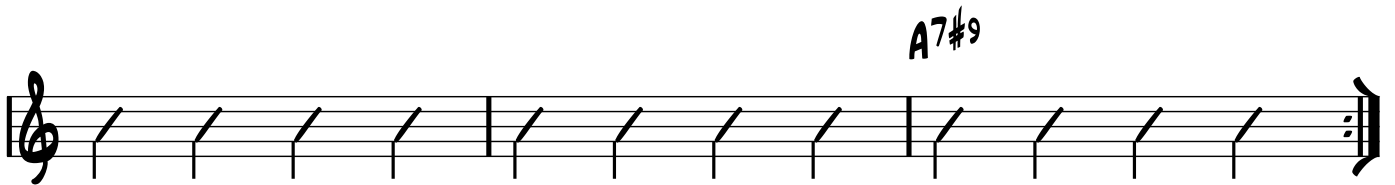
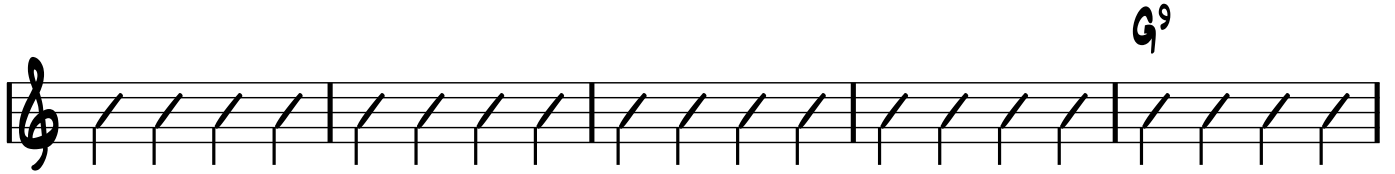
G<sup>9</sup>



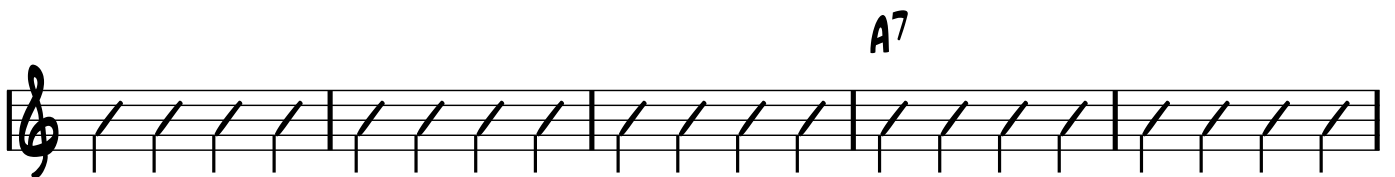
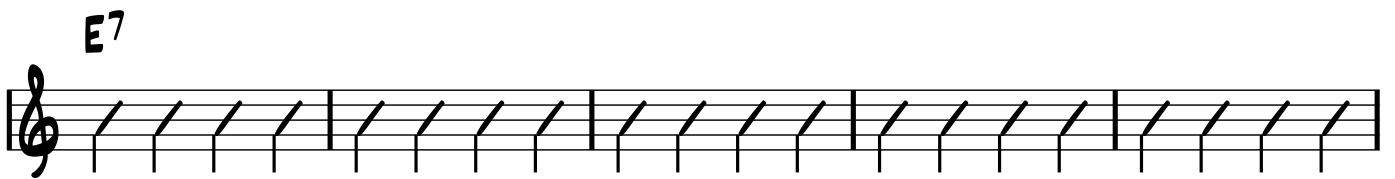
FUNKY BLUES V.2.MP3

D<sup>9</sup>





HEAVY LIVE ROCK IN E 90BPM.MP3



16

A7

E7



HEAVY ROCK IN G MIN 190BPM\_GREATFOR\_TAPPING.MP3

GMIN



GMIN

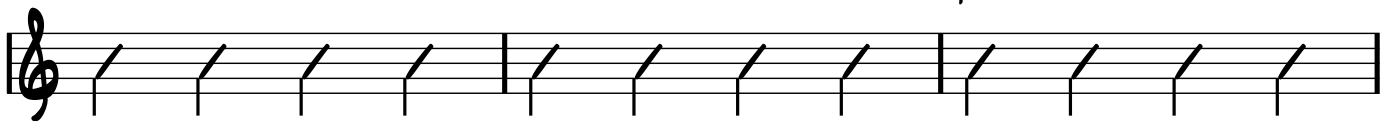
DMIN



Bb

C

GMIN



DMIN

Bb

C



HI\_HOWLONG\_CMIN.MP3

Bb11

Bb

Bb11

Bb

Bb11



Bb

Bb11

Bb

Bdim7


Cmin7


Gmin7








## JAZZY BLUES\_G PENTATONIC AND G MIXOLYDIAN.MP3

G<sup>7</sup>            C/G   G<sup>7</sup>    G<sup>7</sup>            C/G   G<sup>7</sup>    G<sup>7</sup>  



C/G   G<sup>7</sup>    G<sup>7</sup>            F            G<sup>7</sup>            C/G   G<sup>7</sup>  



G<sup>7</sup>            C/G   G<sup>7</sup>    G<sup>7</sup>            C/G   G<sup>7</sup>    G<sup>7</sup>  


C/G   G<sup>7</sup>    G<sup>7</sup>  




## JAZZY BLUES\_JAMMING TRACK 2.MP3

EMIN<sup>7</sup>            AMIN<sup>7</sup> BMIN<sup>7</sup> EMIN<sup>7</sup>            AMIN<sup>7</sup> BMIN<sup>7</sup> EMIN<sup>7</sup>  


AMIN<sup>7</sup> BMIN<sup>7</sup> EMIN<sup>7</sup>            AMIN<sup>7</sup> BMIN<sup>7</sup> CMAT<sup>7</sup>            BMIN<sup>7</sup>  


**E<sub>MIN</sub><sup>7</sup>** **C<sub>MAJ</sub><sup>7</sup>**

**B<sub>MIN</sub><sup>7</sup>** **A<sub>MIN</sub><sup>7</sup>** **B<sub>MIN</sub><sup>7</sup>**

JAZZY BLUES\_JAMMIN TRACK 3.MP3

**E7#9**

**F#7**

**C<sup>11</sup>**

**D<sup>9</sup>**

JAZZY BLUES JAMMING TRACK 5.MP3

**C#<sub>MIN</sub><sup>7</sup>** **A**



C7 F7

MID FUNKY BLUES IN A.MP3

A7 D9

A7 E7

D7 A7 E7

ROCK FUNK FRENZY (IN EM).MP3

EMIN7

AMIN7 CMAT7

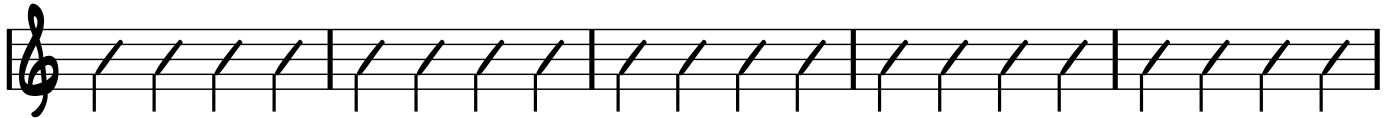
22

E<sup>MIN</sup>7

B<sup>MIN</sup>

A<sup>MIN</sup>7

B<sup>MIN</sup>7



C<sup>MAJ</sup>7

E<sup>MIN</sup>7



SLOW BLUES CORPSE.MP3

G<sup>7</sup>

C<sup>9</sup>

G<sup>7</sup>

C<sup>9</sup>



G<sup>7</sup>

D<sup>9</sup>



C<sup>9</sup>

G<sup>7</sup>

D<sup>7</sup>#<sup>9</sup>



SLOW BLUES G MIN - BASED ON KING ALBERT.MP3

G<sup>MIN</sup>



C<sup>MIN</sup>7



G<sup>MIN</sup> B<sup>b</sup>

C D7#9

SLOW BLUES IN A.MP3

A<sup>7</sup> D<sup>7</sup>

A<sup>7</sup> E<sup>7</sup>

D<sup>7</sup> A<sup>7</sup> E<sup>7</sup>

SLOW HEADBANGER.MP3

E<sup>5</sup> A<sup>5</sup>

E<sup>5</sup> B<sup>5</sup>

24

A<sup>5</sup>

E<sup>5</sup>



SLOWBLUES IN E 70.MP3

E<sup>7</sup>

A<sup>7</sup>



E<sup>7</sup>

B<sup>7</sup>



A<sup>7</sup>

E<sup>7</sup>

B<sup>7</sup>



SOUL\_FUNK JAM IN C MINOR 120BPM.MP3

C<sup>MIN</sup>

F<sup>MIN</sup>

C<sup>MIN</sup>

F<sup>MIN</sup>

C<sup>MIN</sup>



F<sup>MIN</sup>

C<sup>MIN</sup>

F<sup>MIN</sup> G<sup>7#9</sup>

C<sup>MIN</sup>

F<sup>MIN</sup>



C<sup>MIN</sup>

F<sup>MIN</sup>

C<sup>MIN</sup>

F<sup>MIN</sup>

C<sup>MIN</sup>





SOULKEYOFD.MP3

D G D

A musical staff with a treble clef. It contains four measures of rhythmic notation, represented by diagonal slashes. Above the first measure is the chord 'D', above the second is 'G', and above the third is 'D'. The fourth measure is empty.

G D

A musical staff with a treble clef. It contains four measures of rhythmic notation. Above the second measure is the chord 'G' and above the third is 'D'. The first and fourth measures are empty.

G D G

A musical staff with a treble clef. It contains four measures of rhythmic notation. Above the first measure is the chord 'G', above the second is 'D', and above the third is 'G'. The fourth measure is empty.

A G

A musical staff with a treble clef. It contains four measures of rhythmic notation. Above the second measure is the chord 'A' and above the third is 'G'. The first and fourth measures are empty.

A G D

A musical staff with a treble clef. It contains four measures of rhythmic notation. Above the first measure is the chord 'A', above the second is 'G', and above the third is 'D'. The fourth measure is empty.

G

A musical staff with a treble clef. It contains three measures of rhythmic notation. Above the second measure is the chord 'G'. The first and third measures are empty.

D G

A musical staff with a treble clef. It contains four measures of rhythmic notation. Above the first measure is the chord 'D' and above the second is 'G'. The third and fourth measures are empty. The staff ends with a double bar line and repeat dots.

STEADY BLUES JAM IN G\_PERFECT FOR SLIDE\_HARP PLAYERS.MP3

G<sub>MIN</sub>

D<sup>7</sup>

C<sup>7</sup> G<sup>7</sup> D<sup>7</sup>

STEELY DAN IN E.MP3

E<sub>MIN</sub><sup>7</sup>

A<sub>MIN</sub><sup>7</sup> B<sub>MIN</sub><sup>7</sup> C<sub>MAJ</sub><sup>7</sup> B<sub>MIN</sub><sup>7</sup> E<sub>MIN</sub><sup>7</sup>

28

A<sup>MIN</sup>7      B<sup>MIN</sup>7      C<sup>MAJ</sup>7      B<sup>MIN</sup>7      E<sup>MIN</sup>7

B<sup>7</sup>

UPTEMPO 16BARBLUESROCKKEYOFA.MP3

A<sup>7</sup>

D<sup>7</sup>

A<sup>7</sup>      E<sup>7</sup>

D<sup>7</sup>      A<sup>7</sup>

UPTEMPO BLUES SHUFFLE.MP3

D<sup>7</sup>

G<sup>7</sup>

D<sup>7</sup> A<sup>7</sup>

G<sup>7</sup> D<sup>7</sup> A<sup>7</sup>

## WALKING JAZZ.MP3

C<sup>7</sup> F<sup>7</sup> C<sup>7</sup>

F<sup>7</sup> C<sup>7</sup>

D<sup>MIN</sup><sup>7</sup> G<sup>7</sup><sup>#9</sup> C<sup>7</sup> A<sup>7</sup><sup>#9</sup> D<sup>MIN</sup><sup>7</sup> G<sup>7</sup><sup>#9</sup>

## 2SWINGINGBLUESINF.MP3

F<sup>7</sup> F<sup>#</sup><sub>DIM</sub><sup>7</sup> G<sup>MIN</sup><sup>7</sup> G<sup>#</sup><sub>DIM</sub><sup>7</sup> A<sup>MIN</sup><sup>7</sup> D<sup>7</sup> C<sup>MIN</sup><sup>7</sup> F<sup>7</sup>

The image shows two staves of musical notation. Each staff contains four measures of music, with each measure represented by a single diagonal slash. The first staff has four measures with the following chord labels above them:  $B^b7$ ,  $B^b_{MIN}$ ,  $A_{MIN}$ , and  $D7$ . The second staff has six measures with the following chord labels above them:  $G_{MIN}7$ ,  $C7$ ,  $F7$ ,  $F\#_{DIM}7$ ,  $G_{MIN}7$ , and  $C7$ . Both staves begin with a treble clef and end with a double bar line.